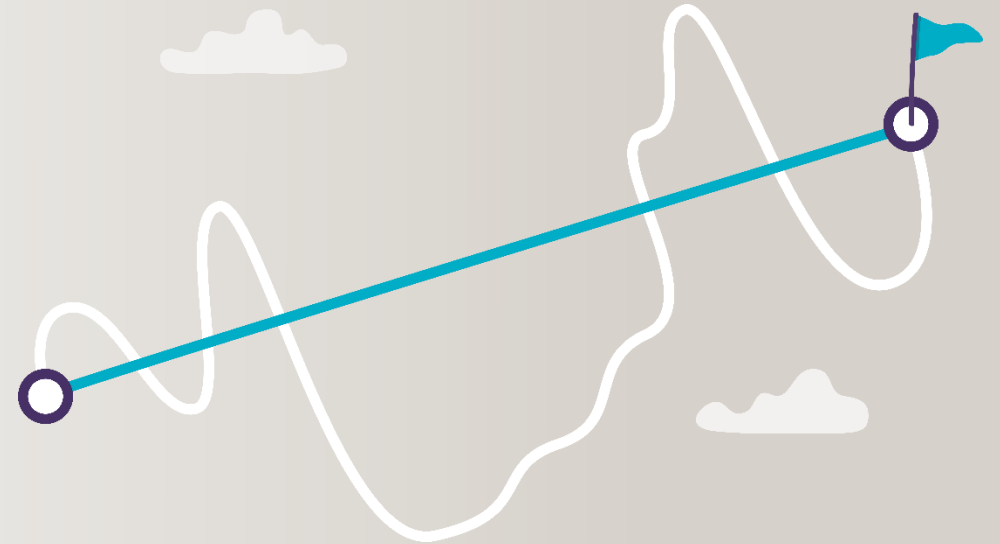




Accelerated Aico to SAP middleware integration

Integrate Aico to your SAP fast, safe and
with fewer IT resources



Achieve more with less IT

“Cost and scarcity of IT resources are holding back finance projects. The accelerated SAP integration package is our response to this challenge. It helps our customers integrate Aico via SAP middleware safely, quickly and with less IT effort.”



Shivam Dosa
Delivery Team Lead at Aico

Reduce your IT workload by 85%

Your IT workload in days for an Aico to SAP middleware integration process

Typical SAP
integration process

20
days

Process with Aico accelerated
integration package

3
days



Reduce IT error by 65%

“Our customers often allocate a substantial portion of their IT resources to integration error correction. To address this issue, we've proactively pre-built all the necessary mappings and iFlow work, leading to a remarkable **65% reduction of errors** during integration testing.”



Sampo Laakkonen
Senior Consultant & SAP
Development Lead at Aico

Aico supports your preferred SAP middleware integration

The accelerated Aico to SAP integration package supports SAP Process Integration (PI), Process Orchestration (PO) and Integration Suite middleware solutions. Whichever middleware solution you prefer, all the benefits will apply.



Acting as a central hub, SAP PI/PO and Integration Suite enables different systems to communicate, whether they are on-premise, in the cloud, or a hybrid. The platform translates, routes and mediates data transactions, thereby optimising and simplifying complex business processes.



Organisations use SAP PI/PO to gain agility, improve operational efficiency and reduce costs. By automating manual tasks and replacing cumbersome point-to-point integrations, it allows enterprises to adapt quickly to market changes and new business requirements.



Your PI and PO development time will be improved with Aico's importable middleware package. Eliminate the need for extensive development on your end and significantly reduce the time it takes to implement PI/PO in your operations. It's a practical solution for a more efficient workflow.